



*2021 Gilroy Garlic City Classic
Director's Packet*

Gilroy High School
750 West 10th Street Gilroy, CA 95020
Event Schedules are available at westernbands.org

Tickets:

Ticket prices are \$8.00 available online and paperless at the event, Free for children 5 and under.

Buy Tickets online on the event page or [click here.](#)

Spectator Parking:

Spectator Parking is located next to the stadium, in the lot located off of Princevalle Street.

Spectator Seating:

All seating is general admission seating and open.

Programs:

Programs will not be available at this event.

Airgrams:

\$5 each.

Restrooms:

Available in the stadium

Concessions:

Contactless payment only

IMPORTANT EVENT INFORMATION FOR DIRECTORS

Day of Event Contact

Mitch Goldsmith | 408.710.7714 | mitch.goldsmith@gilroyunified.org

Check-in:

Directors will check in with parking volunteers when arriving.

Bus & Truck Parking:

Please see map and have your WBA credentials visible.

Restrooms:

Indicated on attached maps by blue and pink dots.

Warm Up Areas, First Aid, Hospitality:

Please refer to the maps and information provided at check-in. First aid is at the entrance to the stadium, Hospitality will be provided outside.

Performer Re-Entry & Staff Access:

Wristbands and directions will be distributed to each arriving band for their performers. WBA Credentials or Tickets to the event for admission to the stadium. Please follow WBA guidelines on what credentials work in what locations.

Staff View Area/Sound Mixing Area:

There are observation platforms located on both sides of the press box open for staff viewing, sound mixing, and videographers only; must show WBA credentials.

Field and Hash Marks:

Turf with high school only hash marks.

Drum Majors:

Line up for awards at band entrance gate at the performance time for the last band.

Adjudication Comments:

The WBA uses *CompetitionSuite*, please make sure you have access before you arrive to the event.

WBA Adjudicators & Event Staff:

Our parking attendants will lead you to your spot. Please have credential visible on arrival.

Critique :

Critique will be available at the event, see map for location.

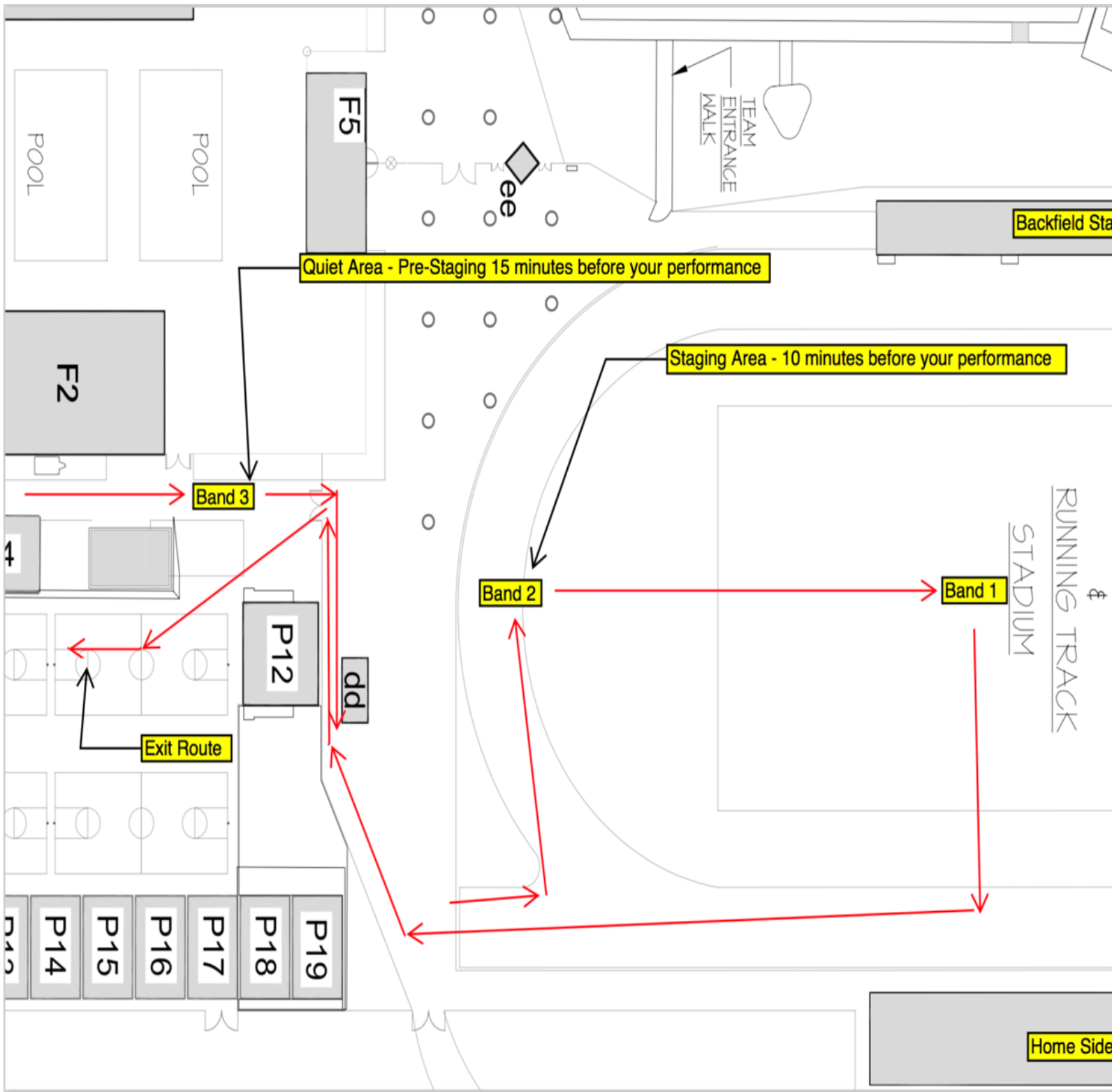
Photography & Video:

Still cameras (digital or film, professional or otherwise) are allowed into the stadium and may be used from stadium seating.

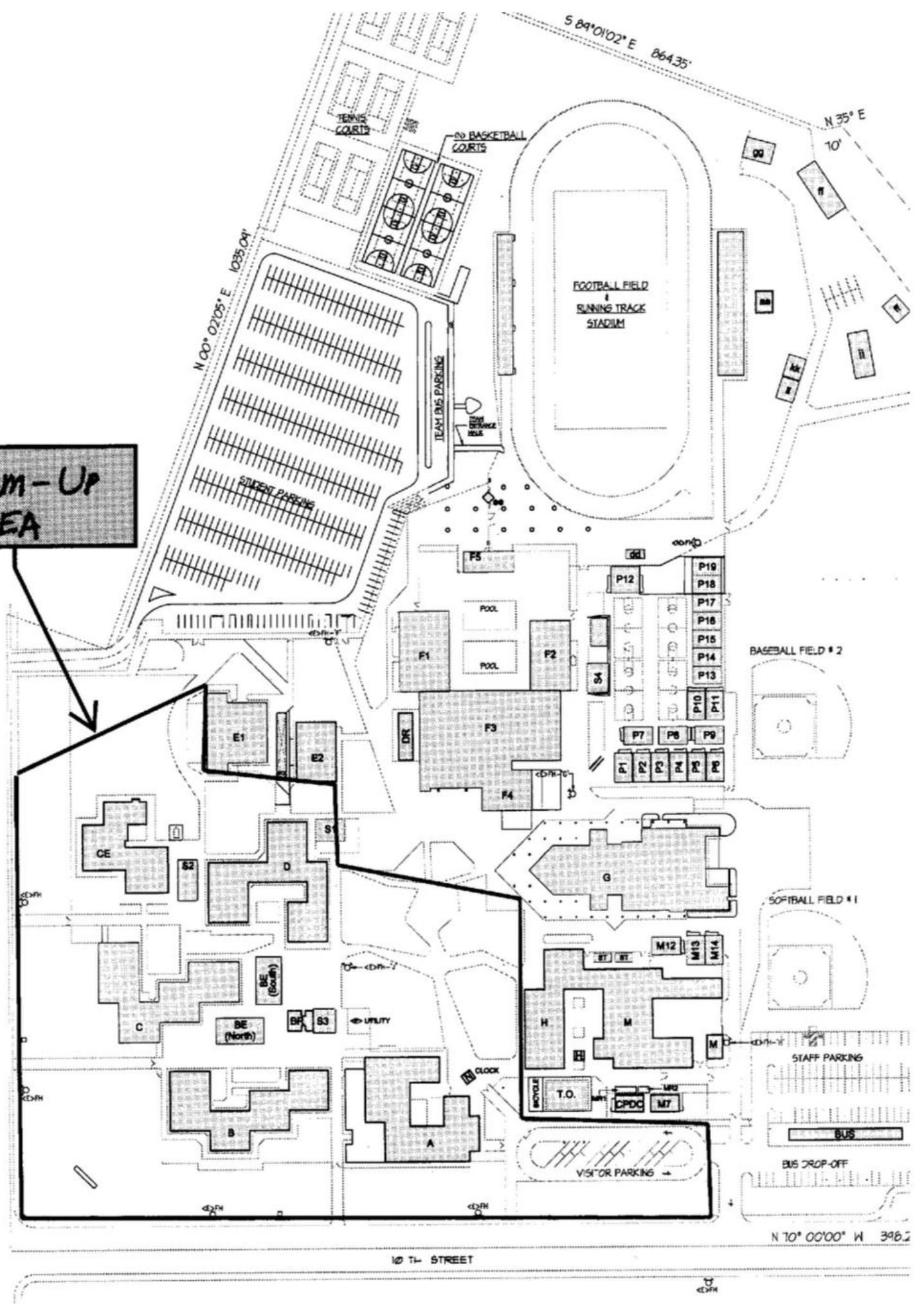
Tripods or other similar equipment that may obstruct the view or path of travel of others in seating areas are not allowed.

Any liability associated with unauthorized recordings will rest with the individual or organization making the recording. WBA does not condone, nor accept any liability for, any unauthorized recording during the event.

Additional Parking Map Coming Soon



WARM-UP AREA



PRINCEVALLE STREET

10 TH STREET

N 70° 00'00" W 348.2