



2019 Kingsburg Viking Classic Director's Packet

Kingsburg High School
1900 18th Ave Kingsburg CA, 93631
Event Schedules are available at <http://westerbands.org/>

On behalf of the Kingsburg High School Marching Band, welcome and thank you for supporting our event! The following information should tell you everything you need to know about the show.

SPECTATOR PARKING: Spectator/Disability parking will be located in the main parking lot directly south of the entrance to the stadium. Parking is free.

ADMISSION PRICING: \$11 for adults, \$6 for senior citizens/students (must present valid school ID), children 5 and under are free.

PROGRAMS/AIR GRAMS: Will be available for purchase at the show.

CONCESSION STANDS: There will be an assortment of food, drinks and snacks for participants and spectators. **NO GRILLS OR OPEN FIRES ARE ALLOWED ON CAMPUS, IN THE STADIUM OR IN THE PARKING LOTS.** This is a fundraising event and we encourage all participants to support our event by purchasing food at the concession stands in the stadium.

FIRST AID: Please make sure your parent chaperones and student leaders are aware of the location of our first aid station. Our first aid station will be located just inside the performance entrance gate.

CONTEST CONTACTS:

- **Mike Schofield** - Director of Bands, Kingsburg HS
Cell: (559)246-5106, email: mschofield@kingsburghigh.com
- **Oliver Bullock** - Assistant Director, Kingsburg HS
Cell: (559) 779-9450, email: oliverbullock@mac.com

DIRECTIONS FOR BUS/EQUIPMENT TRUCK PARKING:

Please try to have trucks and buses arrive together, and they will need to present WBA credentials. Try not to arrive before 2pm.

Important: To streamline logistics we have created two groups for parking, please refer to your group.

“On Campus Group”

Exeter
Selma
Fresno
Madera South
Hanford

“Memorial Park Group”

Hanford West (See designated parking)
Madera
Sierra Pacific
Monache
El Diamante
Redwood

On Campus Group:

- **From 99 North or South:** Take exit 112 for CA-201 E/Sierra Street toward Kingsburg. Travel on East on Sierra Street, turn left onto 10th Ave and travel North. Turn right onto Stroud and travel East. Turn right onto Madsen Ave and travel South. Turn right onto Sierra St. (201) and travel West. Kingsburg HS will be on your right. Please see the General Map for your designated parking areas. An attendant will be present to assist you.

Memorial Park Group:

- **From 99 North or South:** Take exit 112 for CA-201 E/Sierra Street toward Kingsburg. Travel East on Sierra Street, turn Left (North) onto 10th Ave, turn Right (East) onto Stroud Ave, turn Right (South) onto 18th Ave. You will be directed by an attendant as to where to park. View maps for details.

*Hanford West: Please use the Memorial Park route to arrive at your assigned parking

CHECK-IN/WRISTBANDS: Director’s check-in will be located just East of the stadium entrance gate. Wristbands for performers will be given to you in your check-in packet upon arrival. These wristbands will allow entrance to the designated student seating on the home side. Directors and Staff will need to use their official WBA Membership Badge for admission to the stadium. Any chaperones that wish to watch on the home side will be asked to purchase a spectator wristband from the ticket booth.

MUSIC WARM UP AREAS: For your convenience we’ve created warm up zones for each school as noted below. Please see maps for clarification. Silent zones have also been established. We ask that you direct any music warm ups away from the stadium, out of courtesy to the other performing ensembles. **Percussion, please stay as far away from silent zones as possible.**

Area A: Open
Area B: Hanford West
Area C: Exeter HS

Area H: Madera HS
Area I: Sierra Pacific HS
Area J: Monache HS

Area D: Selma HS
Area E: Fresno HS
Area F: Madera South HS
Area G: Hanford HS

Area K: El Diamante HS
Area L: Redwood HS

GUARD WARM UP AREA: Please take advantage of our designated warm up area. It is well lit, close to the stadium and has restrooms located adjacent to the field. We just ask that you're courteous when using portable stereos or gock blocks and face them away from the stadium.

PERCUSSION EQUIPMENT/PROPS: Please make sure you have adequate staff and means to assist the moving of your percussion equipment and/or props to and from the performance area. Please see the detailed schedule for Front Ensemble report times on the WBA website. **Motorized vehicles are NOT allowed on the field grass at any time.**

STAGING: See maps for any information regarding flow chart and staging areas.

ADJUDICATION COMMENTS: The WBA uses *Competition Suite*, please make sure you have access before you arrive to the event.

AWARDS CEREMONY: Drum Majors Line up for awards at band entrance gate at the performance time for the last band.

CRITIQUE: Critique will NOT be available at the event.

HOSPITALITY: Our hospitality area for staff members will be located inside the stadium at the Southeast corner.

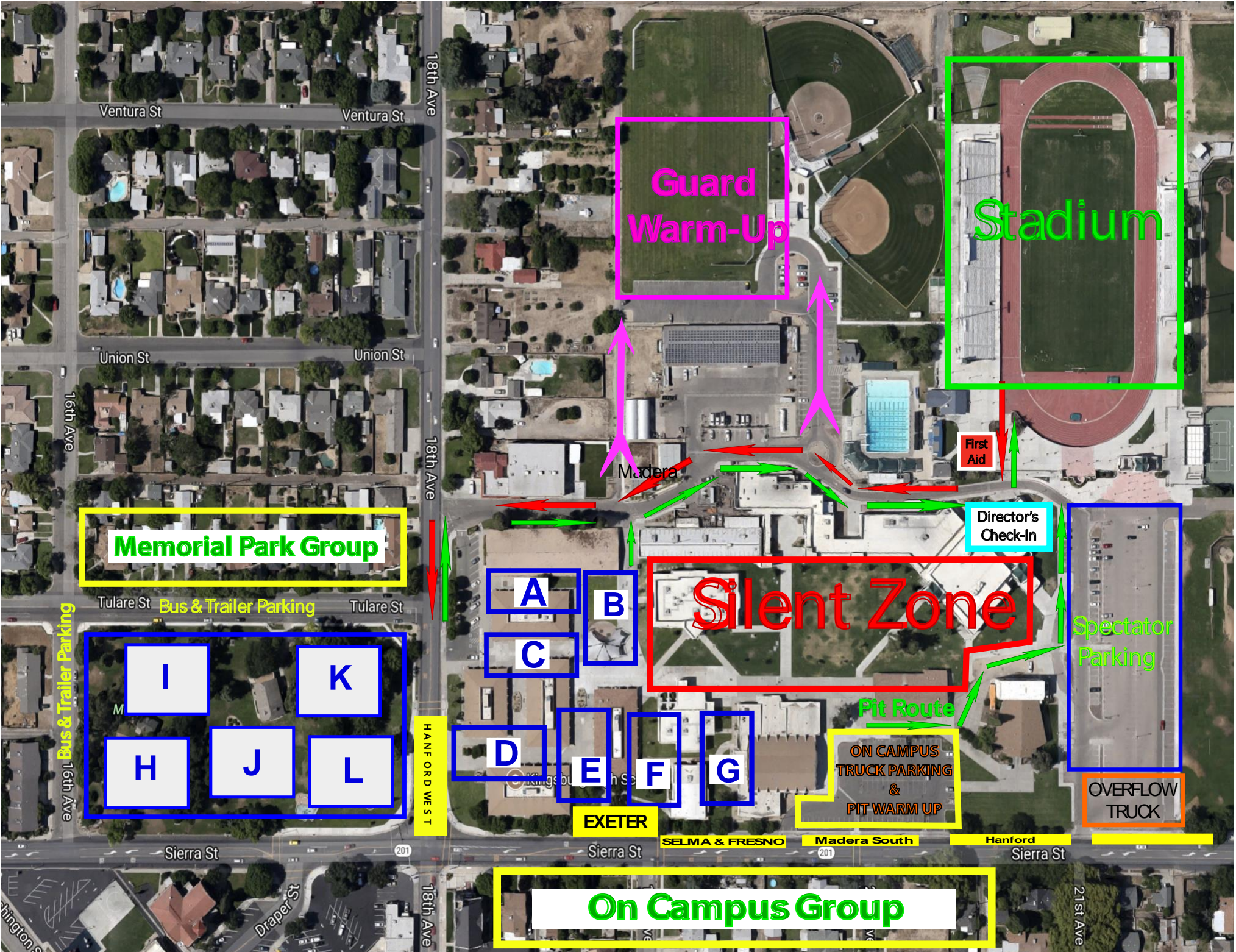
PHOTOGRAPHY & VIDEO:

Still cameras (digital or film, professional or otherwise) are allowed into the stadium and may be used from stadium seating.

Tripods or other similar equipment that may obstruct the view or path of travel of others in seating areas are not allowed.

Any liability associated with unauthorized recordings will rest with the individual or organization making the recording. WBA does not condone, nor accept any liability for, any unauthorized recording during the event.

***Thank you for choosing the
2019 Kingsburg Viking Classic***
PLEASE CHECK OUT SECOND FILE WITH MORE MAPS



Guard Warm-Up

Stadium

Memorial Park Group

Silent Zone

A
B
C
D
E
F
G

H
I
J
K
L
M

On Campus Group

First Aid

Director's Check-In

Spectator Parking

ON CAMPUS TRUCK PARKING & PIT WARM UP

OVERFLOW TRUCK

EXETER

SELMA & FRESNO

Madera South

Hanford

HANFORD WEST

Bus & Trailer Parking

Bus & Trailer Parking

Pit Route

21st Ave

18th Ave

18th Ave

16th Ave

Ventura St

Ventura St

Union St

Union St

Tulare St

Tulare St

Sierra St

Sierra St

Sierra St

Washington St

Draper St

VE